

Art | Basel | Miami Beach 1-4 | Dec | 11

Art Galleries Sector
Booth K3

Alexander Gray Associates is pleased to announce our participation in the Galleries sector of the Art Basel Miami Beach 2011 art fair. Throughout the duration of the fair, the Gallery will showcase the multidisciplinary practices of six Gallery artists. Included are a cross-generational array of historically relevant works from the past 50 years, including painting, sculpture, works on paper, photography, and installation.

Art Kabinett: Joan Semmel

(b. 1932, New York)

The Gallery's booth includes an Art Kabinett presentation of Joan Semmel's painting, including seminal works from the 1970s. A leading figure of the Feminist art movement in New York, Semmel's figurative paintings radically have challenged traditional representations of sexuality and gender since they were first shown in the early 1970s. Today, alongside recent self-portraits exploring aging and allegory, her bold colors, deft brushstroke and evident politics reinforce the permanence of painting and its role in shaping social and cultural perceptions.



Joan Semmel
Green Heart, 1971
Oil on canvas
48h x 58w in

Luis Camnitzer

(b. 1937, Germany, raised Uruguay)

A pioneer of Conceptual Art in Latin America, Luis Camnitzer is represented by iconic text-based graphics from the late 1960s, including works that have not been publicly exhibited. Playing with language and visual form, these works engage the viewer with wry humor, transliteration and shifting expectations about communication. Camnitzer's work is the subject of a traveling retrospective, organized by the Daros Latinamerica Museum, currently on view at the Belkin Art Gallery, University of Vancouver, British Columbia, Canada.



Luis Camnitzer
Garden Wall Door Table, 1968
Etching on paper
25h x 24w in
Edition of 10 with 1 AP

Melvin Edwards

(b. 1937, Houston, TX)

Sculptor Melvin Edwards' welded steel artworks are celebrated for their political references and densely packed forms. Works on view at the fair include a selection from the renowned *Lynch Fragments* series. Edwards is a central figure in the exhibition *Now Dig This! Art and Black Los Angeles 1960-1980*, on view at the Hammer Museum, Los Angeles.



Melvin Edwards
Spring, 1973
Welded Steel
11h x 6w x 8d in

Lorraine O'Grady

(b. 1934, Boston, MA)

Crossing disciplines including performance, criticism, photography and video, Lorraine O'Grady's meditations on Black identity and women's representation have positioned her as a fore-bearer of conceptual and activist practice. In addition to photo-based works in the booth, O'Grady's video, *Landscape (Western Hemisphere)* (2011) will be screened in the Art Basel Video program, on Wednesday, November 30, 2011 at 8PM, at the New World Center's Soundscape Park Video Wall.



Lorraine O'Grady
Landscape (Western Hemisphere)
2010/2011
Single channel video

Hassan Sharif

(b. 1951, Dubai, United Arab Emirates)

Emirati Hassan Sharif's experiments with conceptual art, criticism, performance, drawing and assemblage have impacted subsequent generations of artists emerging from the Gulf region. In 2011, Sharif was the subject of a retrospective exhibition, *Hassan Sharif: Experiments & Objects 1979-2011* curated by Catherine David and Mohammed Kazem, presented by the Abu Dhabi Authority for Culture & Heritage/ Platform for Visual Arts. Photo-documentation of early 1980s performance will be a highlighted in Sharif's forthcoming 2012 show at the Gallery, the artist's first solo exhibition in the United States.

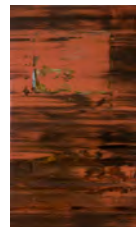


Hassan Sharif
Wave-like and Straight Horizontal No. 1-3, 2007
Ink on Paper
23.03h x 16.54w in

Jack Whitten

(b. 1939, Bessemer, AL)

Four decades of Jack Whitten's experiments with paint will be represented over the course of the fair. On view is an important early abstraction, first exhibited in Whitten's 1974 solo exhibition at the Whitney Museum of American Art. Whitten's work is currently featured in *The Bearden Project* at the Studio Museum in Harlem, New York.



Jack Whitten
Sorcerer's Apprentice, 1974
Acrylic on canvas: 88.25h x 50.5w in